



NEWS RELEASE

Product Update Announcement

'LIVE GRAPH'

With the latest version of MCS-CONNECT (Ver. 18.00) you have the ability to create 'LIVE GRAPHS'

The user can connect to a controller, setup a 'LIVE GRAPH' for:

'ONE' to 'FOUR' Analog or Relay Sensors or 'ONE' or 'TWO' Digital Sensors,

'LIVE GRAPH' will plot a 'REAL TIME' GRAPH, and save the different graph setups to your computer or Touchscreen.

The screenshot shows the MCS-CONNECT software interface. A 'Live Graph' menu is open, listing options: Add Live Graph, Save A Live Graph, Save A Live Graph Group, Load A Graph, Load A Graph Group, and Remove A Saved Live Graph. A red arrow points from the word 'New' to the 'Live Graph' menu. Below the menu, a graph window titled 'GW75' displays a line graph with a red line and a blue line. The graph shows data points over time, with the red line fluctuating between approximately 45 and 65, and the blue line fluctuating between approximately 10 and 20. The background of the software interface shows various control panels, including 'Sensor Inputs', 'Analog Outputs', 'Relay Outputs', and 'Setpoints'.

When you connect to a controller, open a MCS-CONNECT work space, you have the ability to load a saved 'LIVE GRAPH' and view it 'LIVE' in your status screen.

Setting up the 'LIVE GRAPH' is easy. The technician can setup different 'LIVE GRAPHS' to monitor different sensors, save each 'LIVE GRAPH SETUP' and then save them in a 'GROUP' file and load them into your work space each time you view the controller you are connected to.

With MCS-CONNECT, the ability to move and size different windows in your work space, makes viewing these graphs easy.

Any questions regarding this release, contact sales@mcscontrols.com

Information contained in this document has been prepared by Micro Control Systems, Inc. and is copyright © protected 2016.

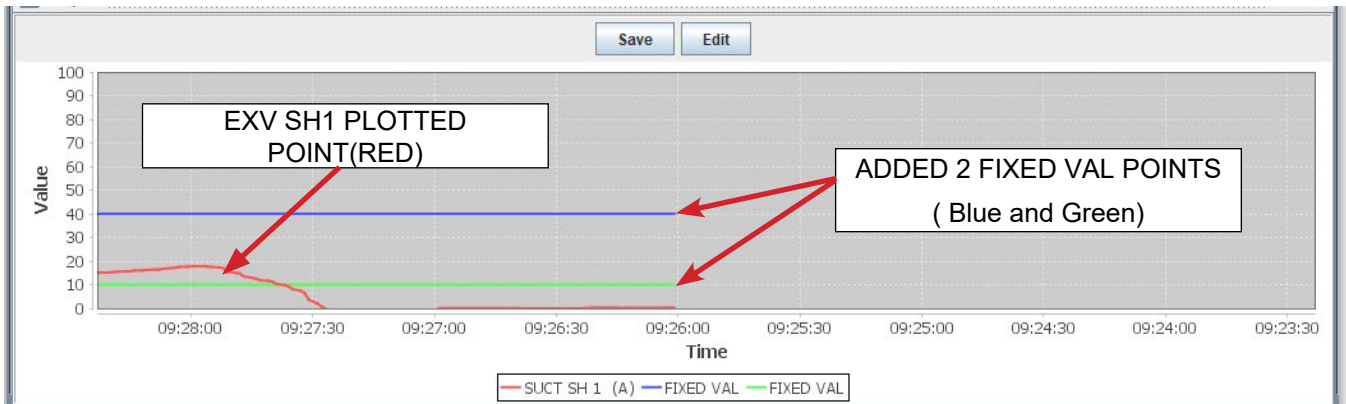
Copying or distributing this document is prohibited unless expressly authorized by MCS.



MCS-CONNECT - Version 18.27.10

With the release of MCS-CONNECT Version 18.27.10, the 'Live Graph' section has been upgraded to include the following:

- **GRAPHS - LEFT TO RIGHT READING** - Graphs now move from left to right as shown in screen shot below: This makes it easier when viewing the graph to see changes aligned with the legend on the left.



- **'FIXED VAL'** - When adding a new Live Graph you now can set 'Fixed Val' for setting up you zones for plotting a point. Each new Live Graph can contain 2 fixed values on the graph. These fixed values or lines help in seeing the movement of the plotted point (see above screen shot).

ADDED 2 FIXED VAL POINTS

- **OVERWRITE A SAVED LIVE GRAPH** - Live Graphs now can be overwritten.
- **EDIT and RE-SAVE A LIVE GRAPH** - with this change a technician can now edit a saved Live Graph.
 1. OPEN THE LIVE GRAPH YOU WANT TO EDIT
 2. MAKE CHANGES, CLICK 'SUMMIT'
 3. ONCE THE EDIT IS CORRECT, CLICK SAVE, overwriting the Live Graph or saving as a new graph.

(continued on reverse side)

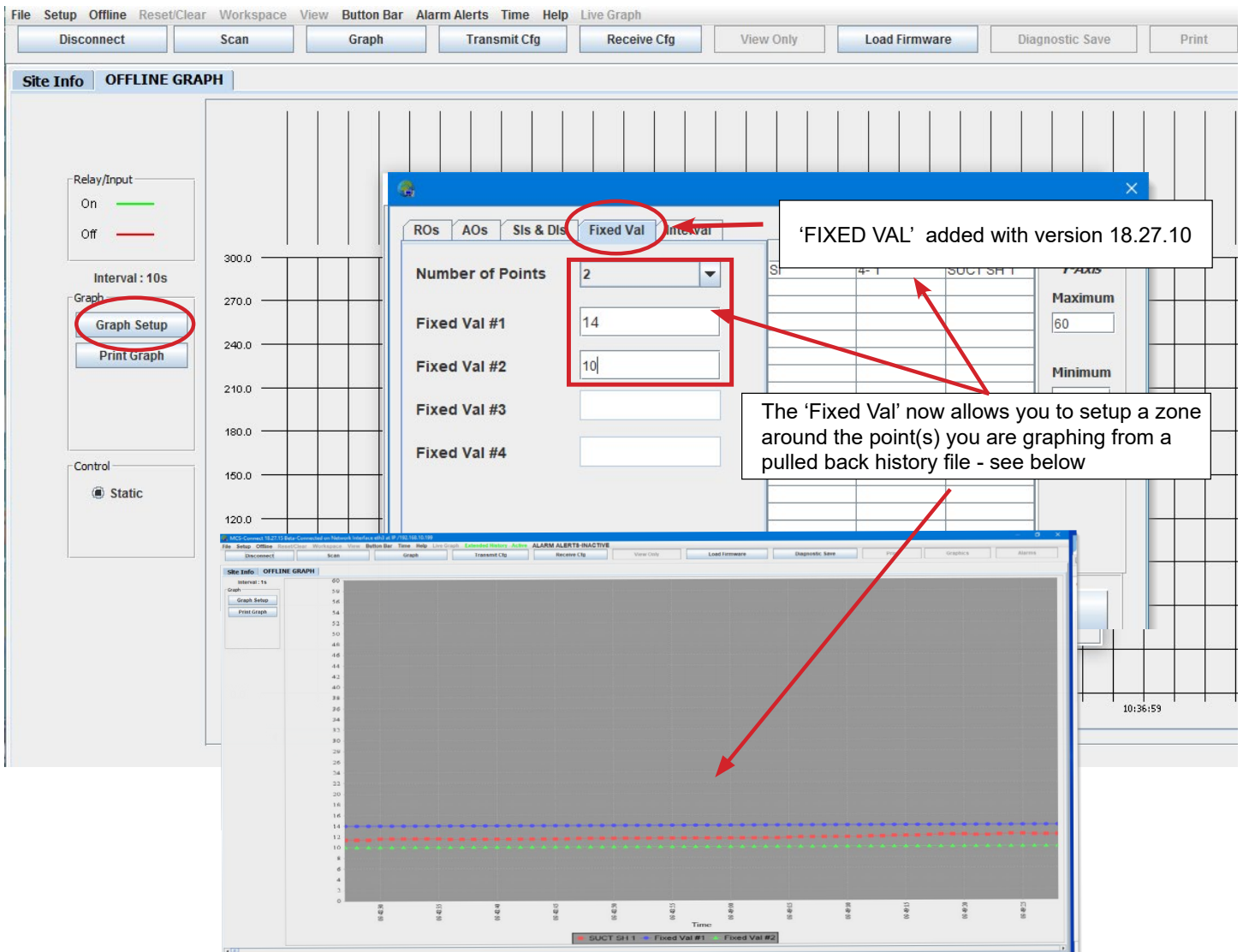
■ GRAPH SETUP CHANGES FOR HISTORY PULLBACK

The MCS controller captures history of the status for all RO, AO and SI points based on the setup of your configuration file.

Prior to MCS-CONNECT Version 18.27.10 the user had to setup additional "USER LOGIC" statements to capture additional internal information for plotting.

With the release of the above version, you are now able to add the fixed points after receiving the pulled back history file along with the points you are plotting.

Having user logic statements added to your config is no longer necessary.



You can set 4 different 'fixed Vals' for setting zones for different graphed points.

UPGRADE YOUR VERSION OF MCS-CONNECT TODAY

Any questions regarding this release, contact sales@mcscontrols.com
Information contained in this document has been prepared by Micro Control Systems, Inc. and is copyright © protected 2016.
Copying or distributing this document is prohibited unless expressly authorized by MCS.

5580 Enterprise Pkwy. Fort Myers, Florida 33905
Office: 239-694-0089 Fax: 239-694-0031
www.mcscontrols.com